

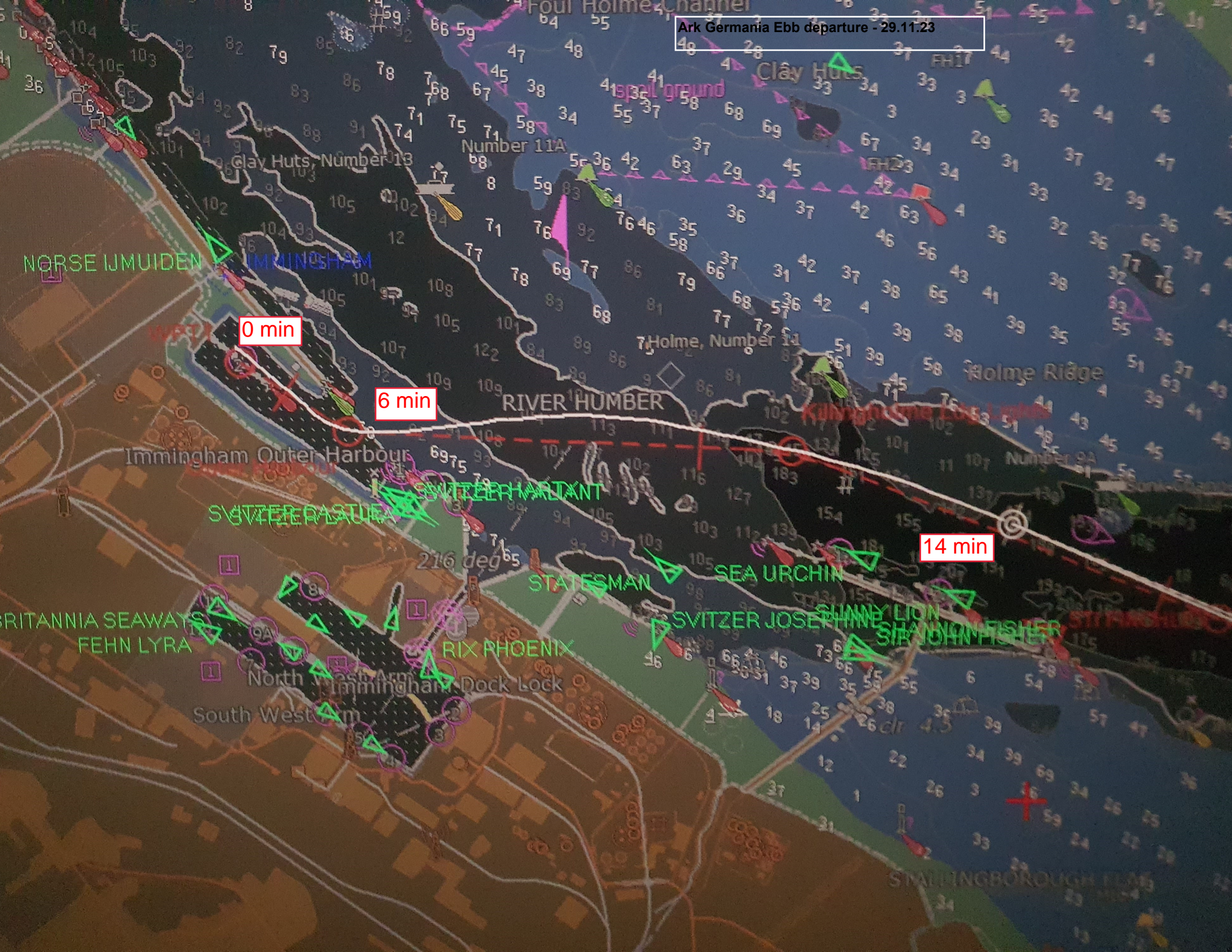
Ark Germania Ebb departure - 29.11.23

NORSE IJMUIDEN

0 min

6 min

14 min



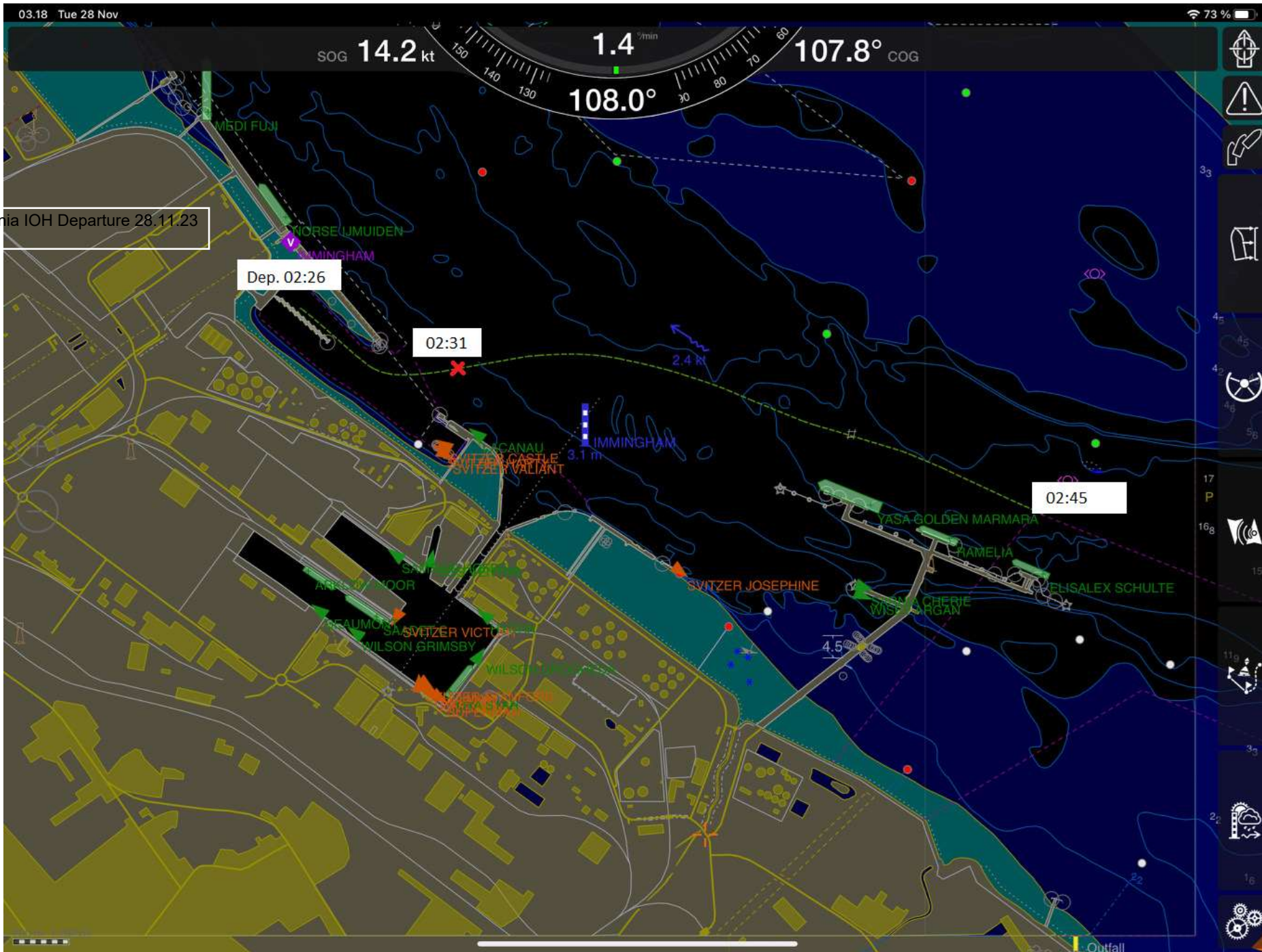
SOG 14.2 kt 1.4 [°]/min 107.8° COG 108.0°

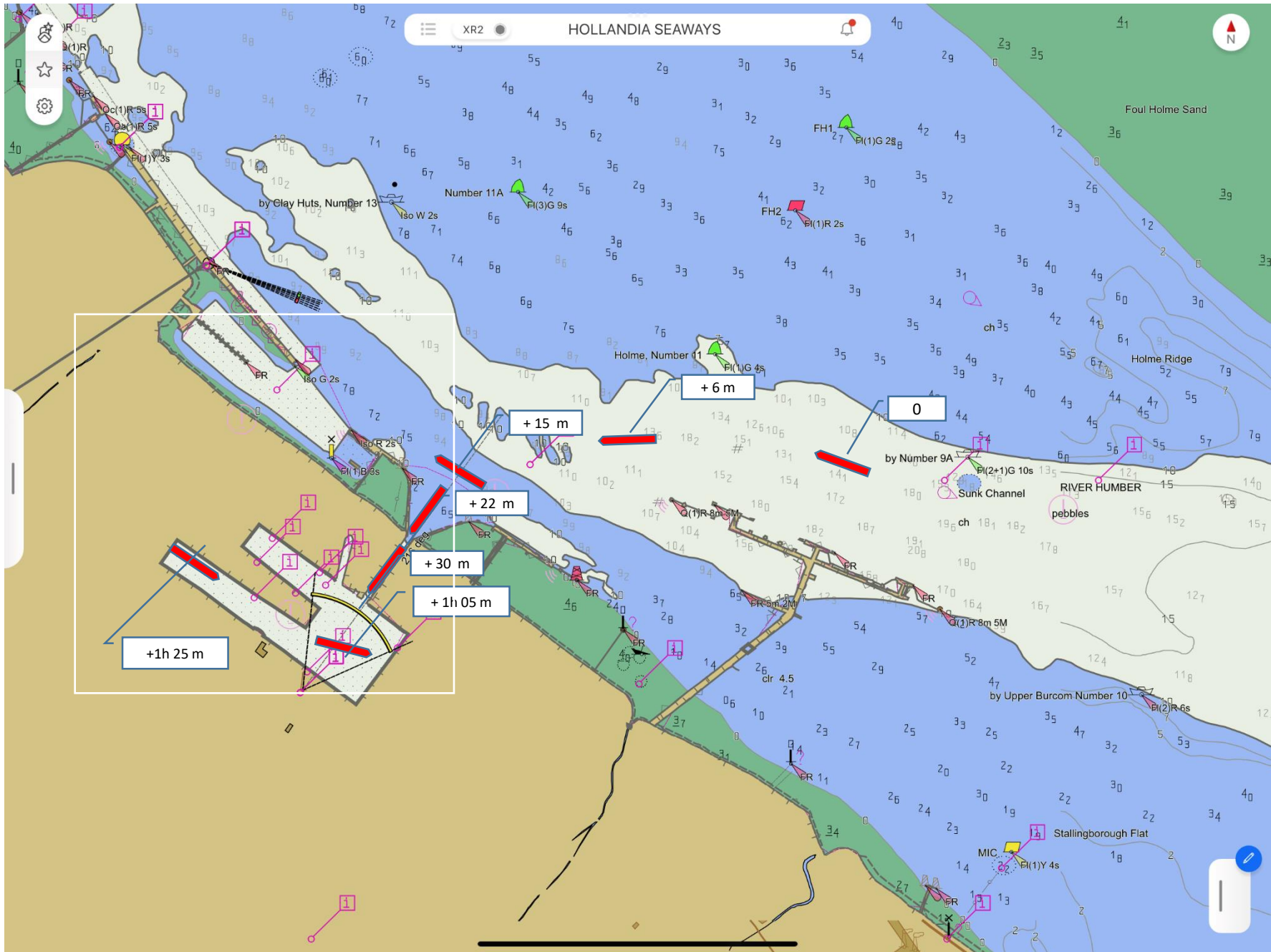
Petunia IOH Departure 28.11.23

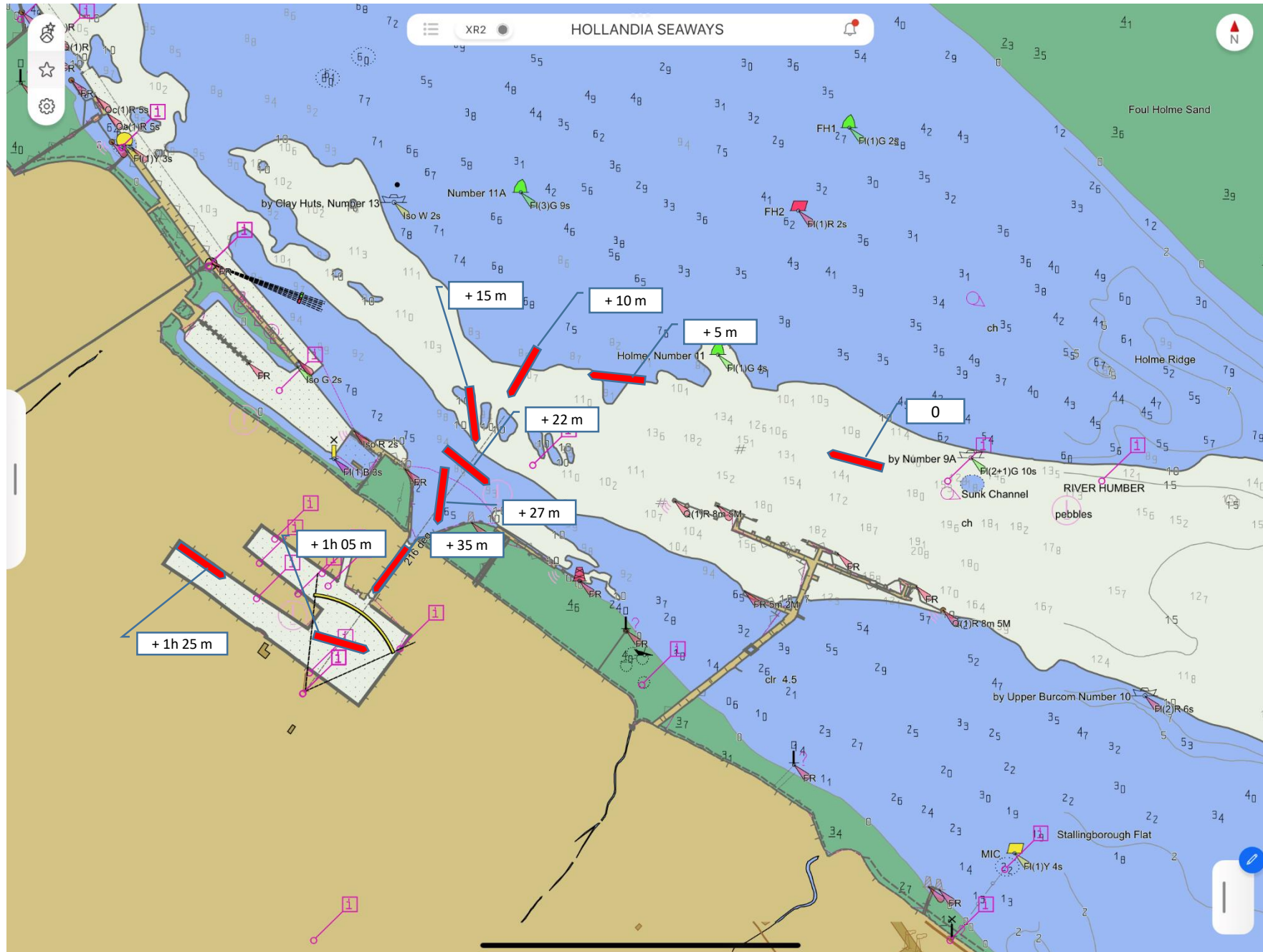
Dep. 02:26

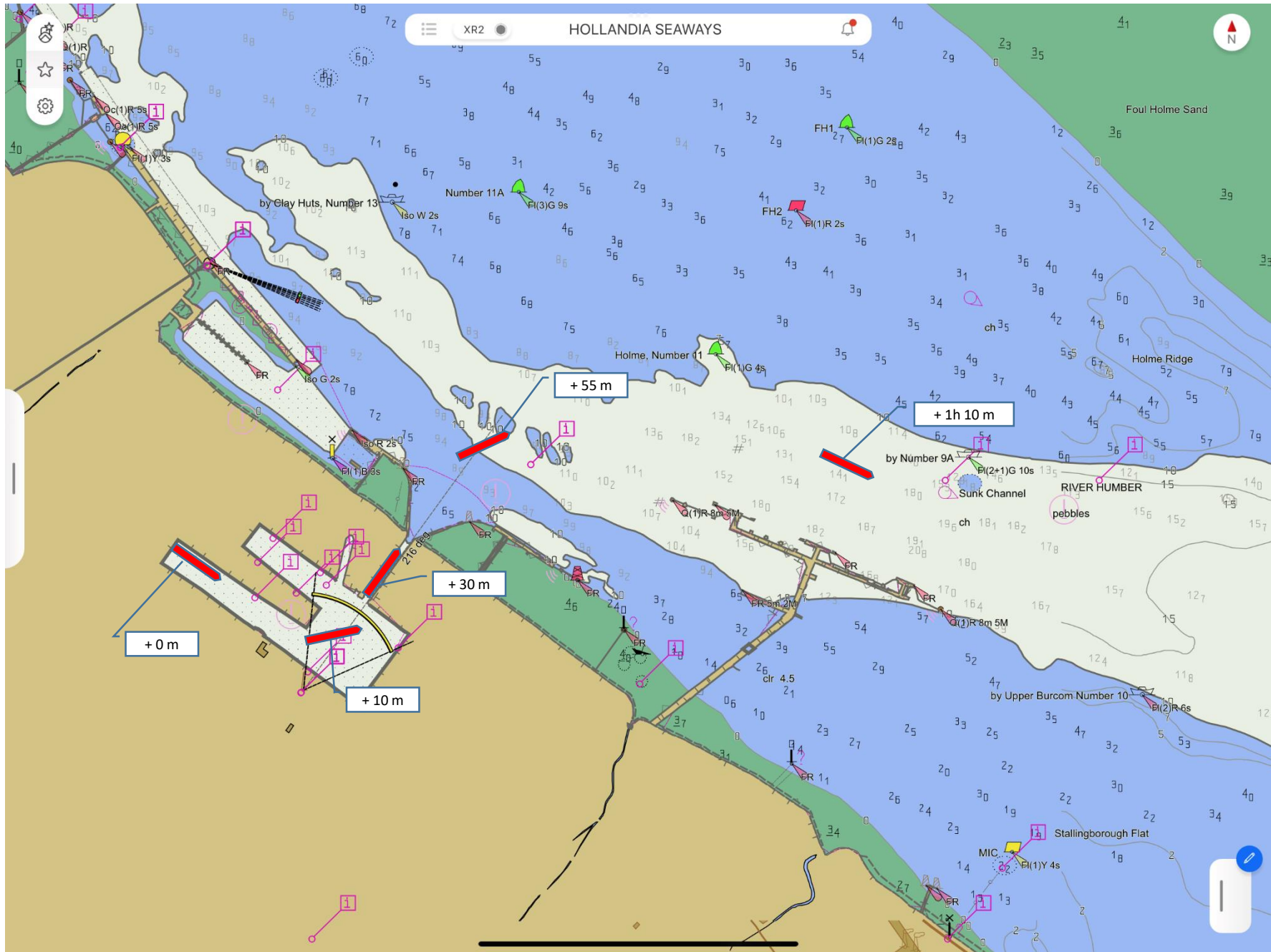
02:31

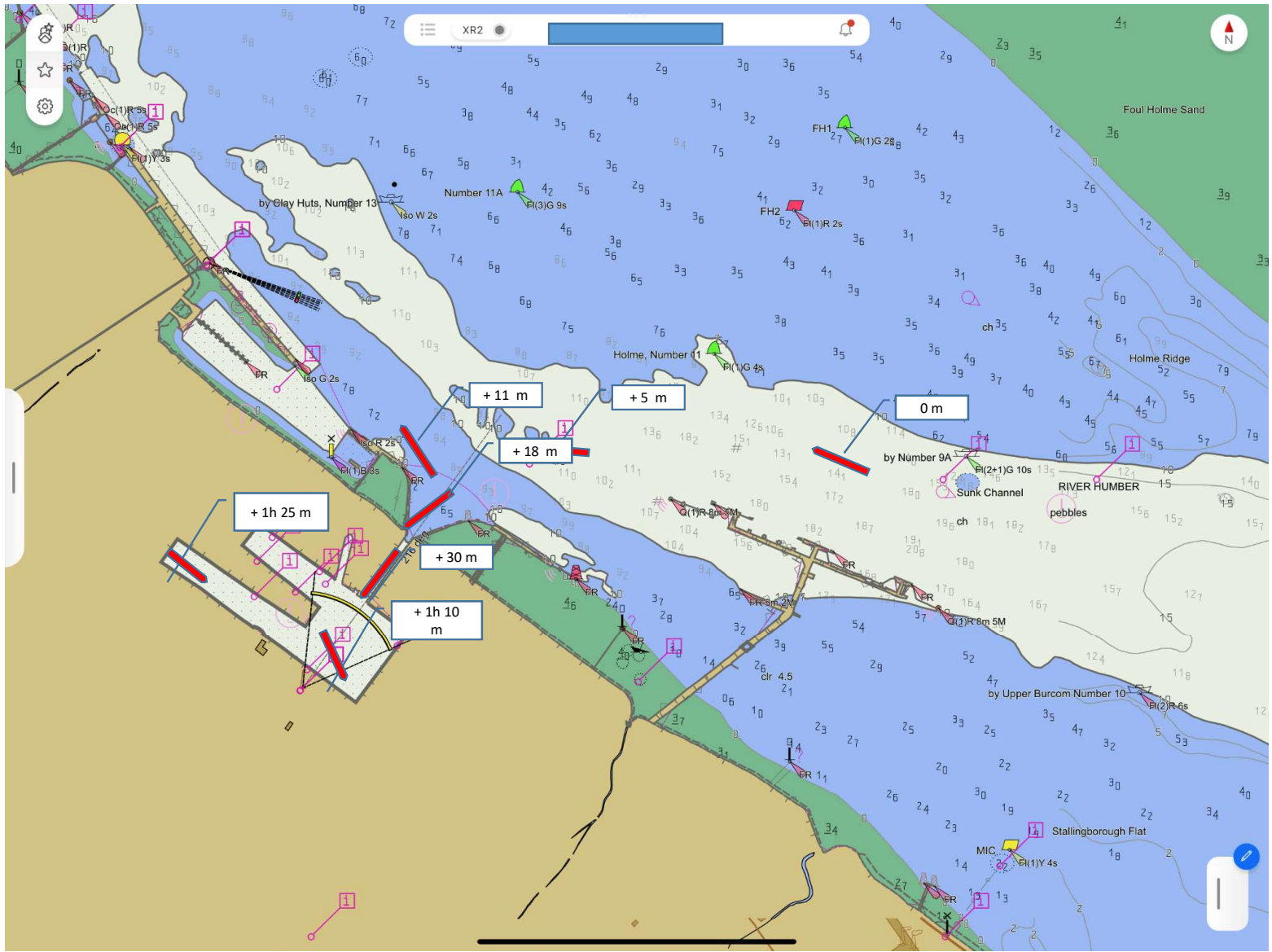
02:45

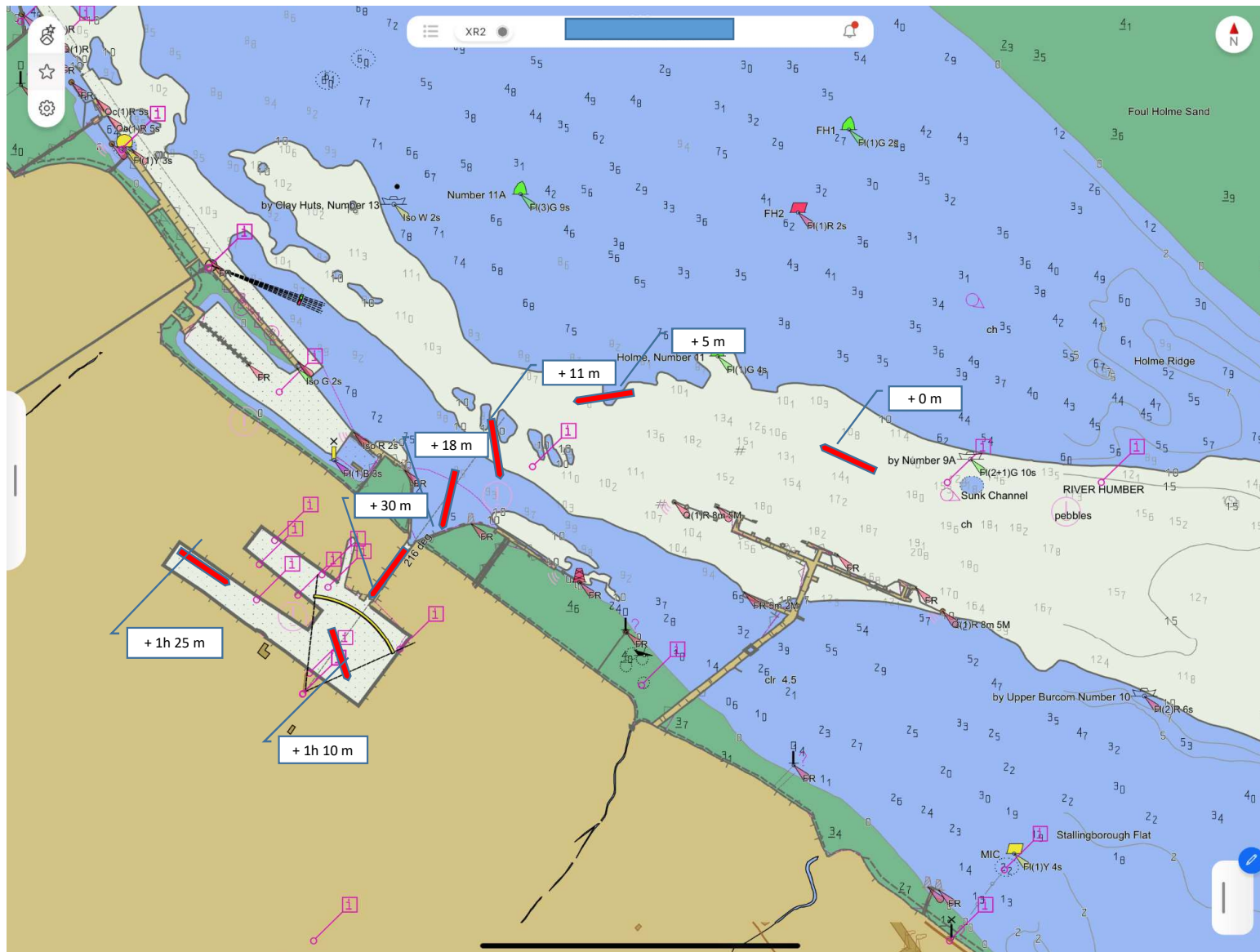


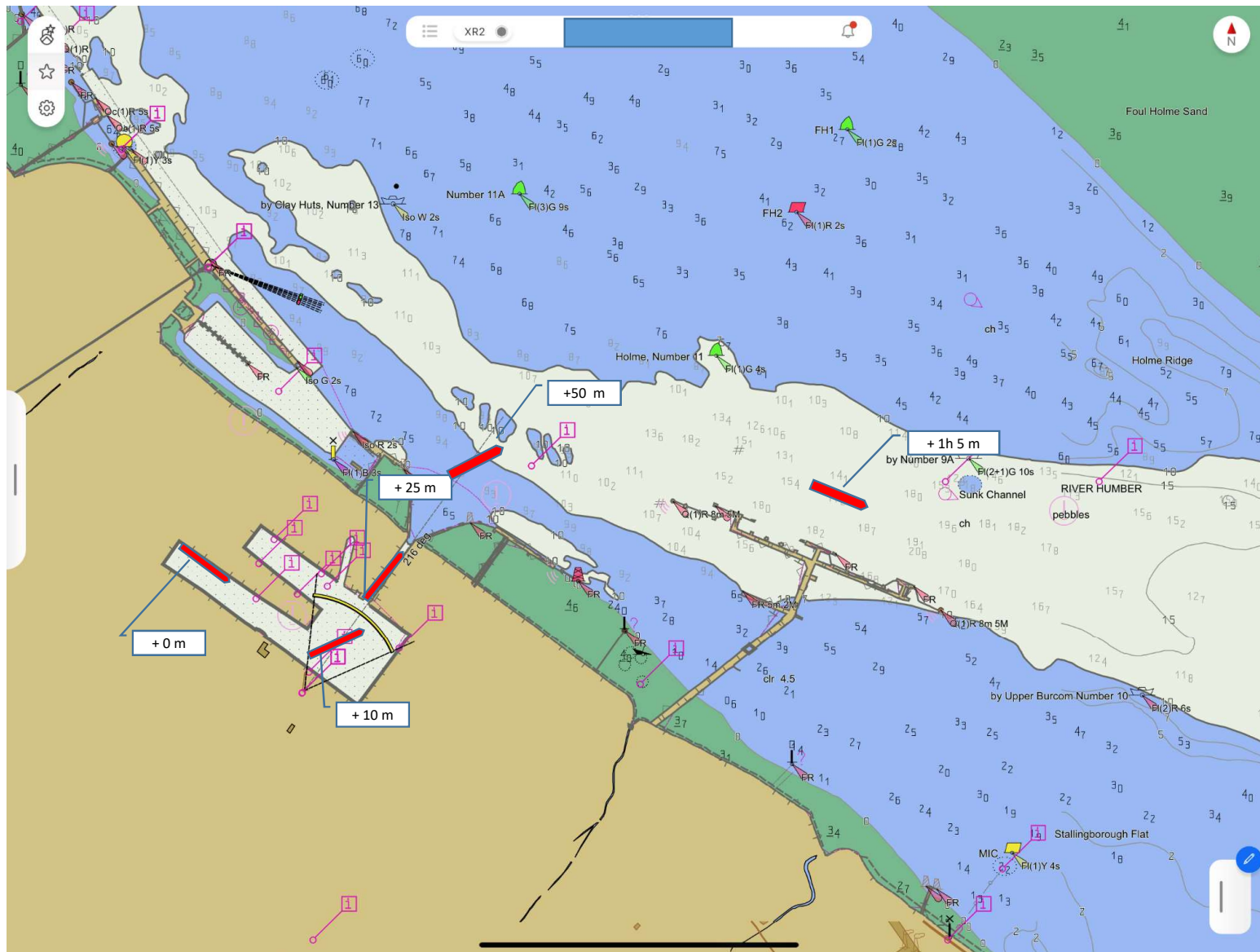












ECDIS

Time Sensor 1
27 NOV 2023 01:18:56 LT

ENC Catalogue: All Depth [m]

Views: [Icons]

Display

Orient: North Up Browse

Range: 0.75 NM Rings Off

REF: CCRP Hide Overlays

Heading & Speed

HDG: 130.2° GYRO-1

STW: 0.2 kn LOG

COG: 213.3°

SOG: 0.0 kn AUTO DGSS 1

Set: 149.1° Drift: 0.2 kn

Position Window

LAT: 53°38.271' N AUTO DGPS 1

LOA: 000°11.935' W Adjust

Vector & Trail

REF: Ground ENC

Vector: 30 min T

Trail: Off T

Profil: Off T

Tracking

OFF Set: ---, ° --- NM

AUTO Fill Next: ---, ° --- NM

Settings Externity: 3 [Icon]

Alerts

No Unacknowledged Alerts

Alerts... Cautions.



MENU [Icons] S [Icons]

Silent Mode

20 30

150°
30
2

BOOTH ROAD

Foul Holme S

Foul Holme Channells

Clay Huts, Number 13

Number 11A5

FH1

FH2

34 min

RIVER HUMBER

Holme Ridge

Holme, Number 11

NORSE LINDEN

IMMINGHAM

HOLLANDIA SEAWAYS

Immingham Outer Harbour

8 min

Killingholme Ldg Lights

Number 9A

HER CASTLE VALIANT

Nelson

0 min

BRITANNIA SEAWAYS

North West Arm

Immingham Dock

South West Arm

Immingham Dock Lock

216 deg

SEA URCHIN

SVITZER JOSEPHINE

SHANGHAI FISHER

SUN LION

ELM

RIVER HUMBER

26'clr 4.5